

Pöyry Project Management Approach IPMA World Conference 2009

Helsinki 16.06.2009
Jarmo Suominen
President, BA Chemical Process Industry
Pöyry Industry Oy

Agenda

Pöyry 4ePCM™ project management concept

Pöyry Integrated Project Management Team approach

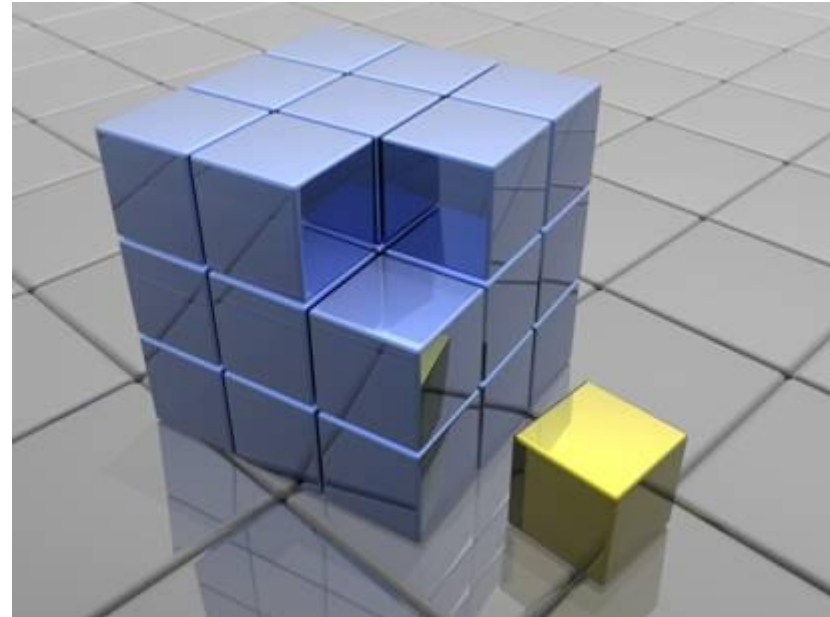
Pöyry Project Management Products

Pöyry Project Academy

EPCM Project Implementation method
4ePCM™ - Interactive Project Management

Project implementation method

- Selecting the right implementation method is crucial to meet cost and schedule targets of the project
- Regardless of the implementation method same work has to be done
- Selection of the implementation method determines the roles, responsibilities and liabilities of the project parties in performing, supervising and approving
- Interactive work is a necessity to reduce the investment costs



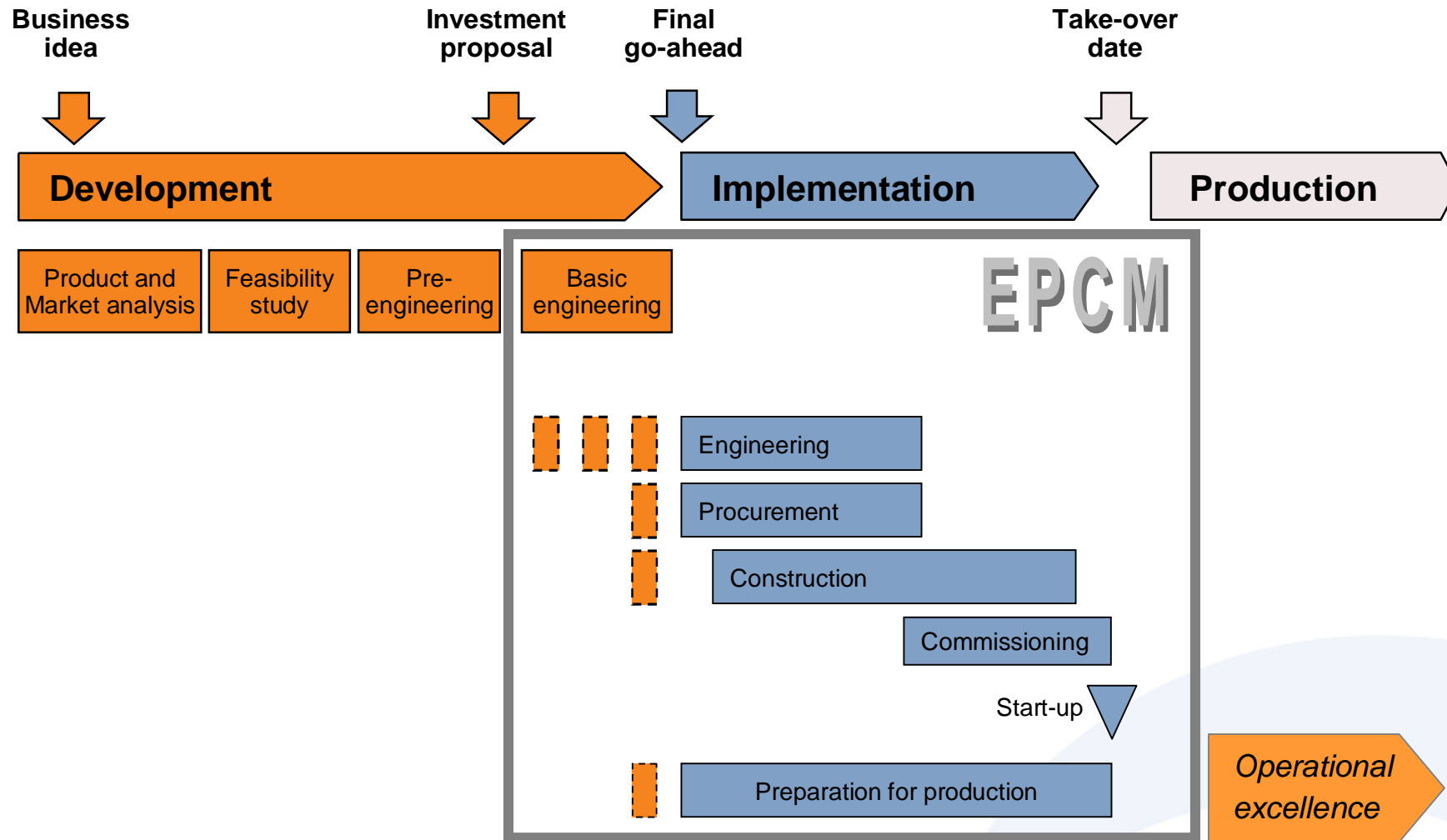
- Common language, standard scope definitions, transparency and clarity are needed

Different implementation methods

OB	= Open Book			
ESS	= Extended Scope of Supply			
EPS	= Engineering	-Procurement	-Supply	
EPCM	= Engineering	-Procurement	-Construction Management	
EPC	= Engineering	-Procurement	-Construction	
BOO	= Build	-Own	-Operate	
BOOT	= Build	-Own	-Operate	-Transfer
BOT	= Build	-Own	-Transfer	
DB	= Design	-Build		
DBO	= Design	-Build	-Operate	
DBFO	= Design	-Build	-Finance	-Operate
FBO	= Finance	-Build	-Operate	
FBOM	= Finance	-Build	-Operate	-Maintain

.....

Project lifecycle and EPCM



[Back](#)

4ePCM™ concept

4ePCM™ – in nutshell

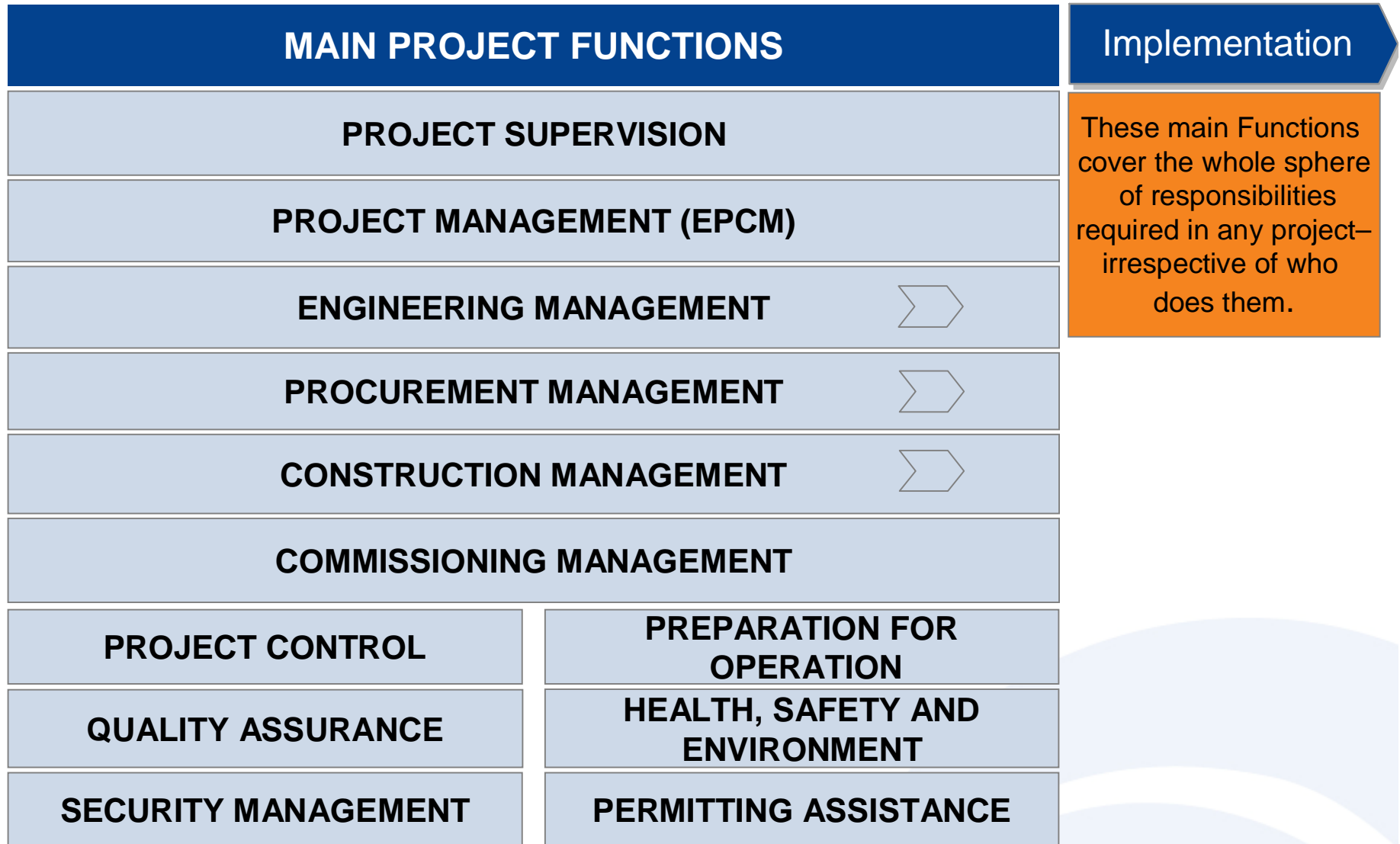
Customer-oriented interactive project management procedure

- Pöyry has collected its cumulative project execution experience and best practices into a unique 4ePCM™ concept
- Use four-level database build around sets of
 - Functions
 - Processes
 - Tasks
 - Deliverables
- By using 4ePCM™ Scope of Services definitions are transparent and clear and can be assigned to a specific party.

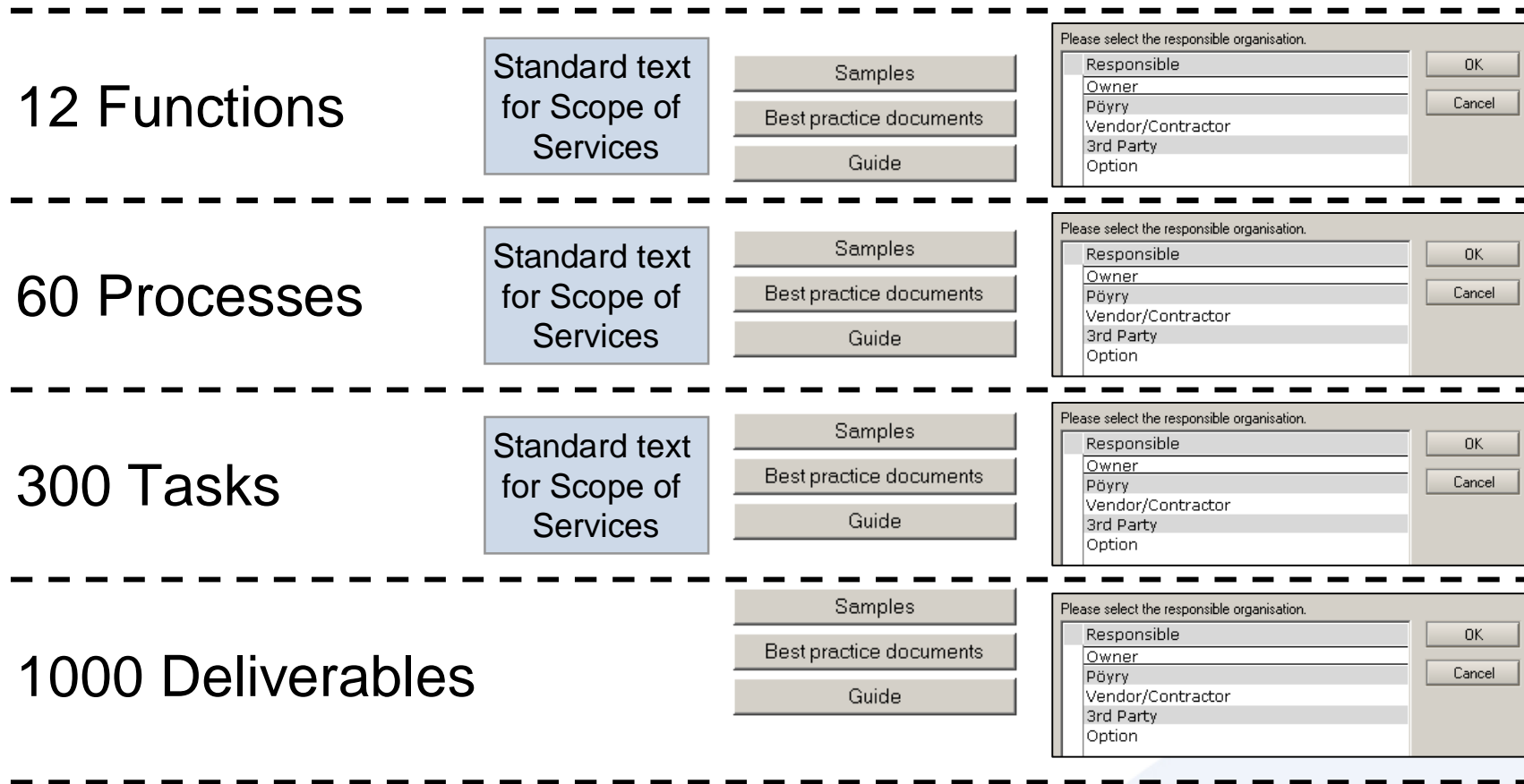


- 4ePCM™ brings
 - structure
 - clarity
 - efficiency
 - transparencyto any project and it is designed especially for the implementation of EPCM projects

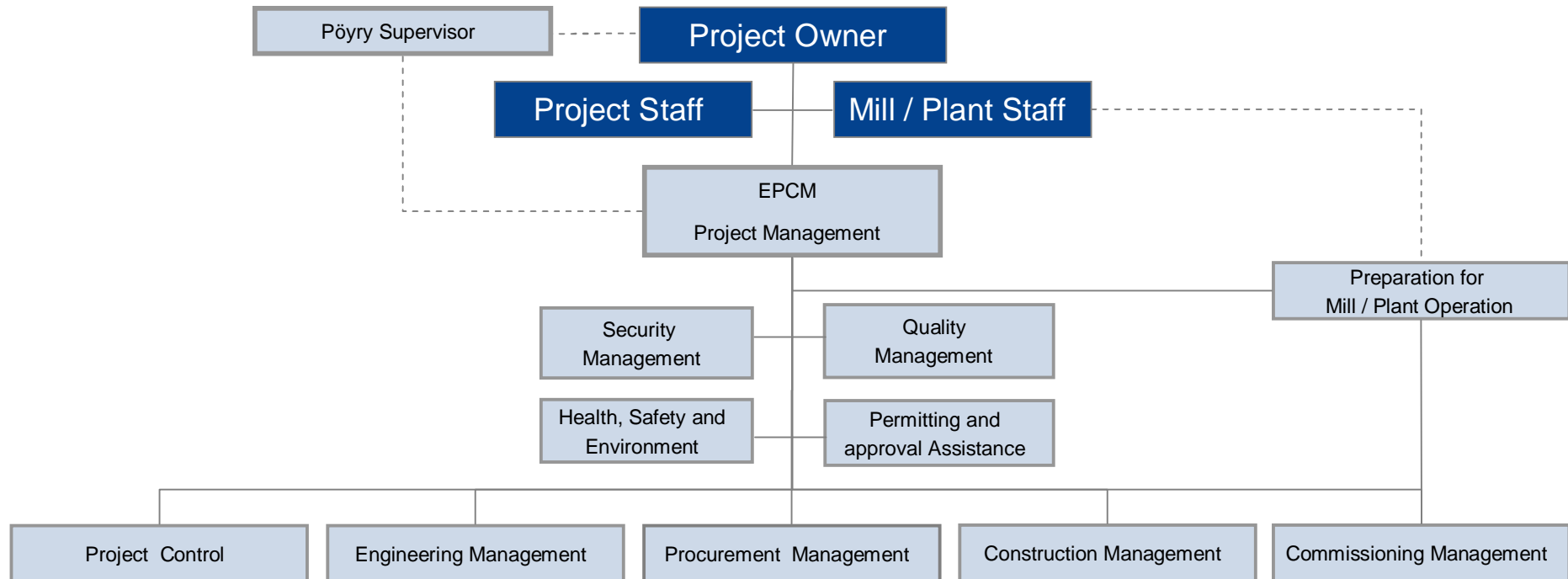
4ePCM™ – Project flow



4ePCM™ – the Four levels of electronic database



4ePCM™ – Integration of Knowledge



12 Functions → 60 Processes → 300 Tasks → 1000 Deliverables

Agenda

Pöyry 4ePCM™ project management concept

Pöyry Integrated Project Management Team approach

Pöyry Project Management Products

Pöyry Project Academy

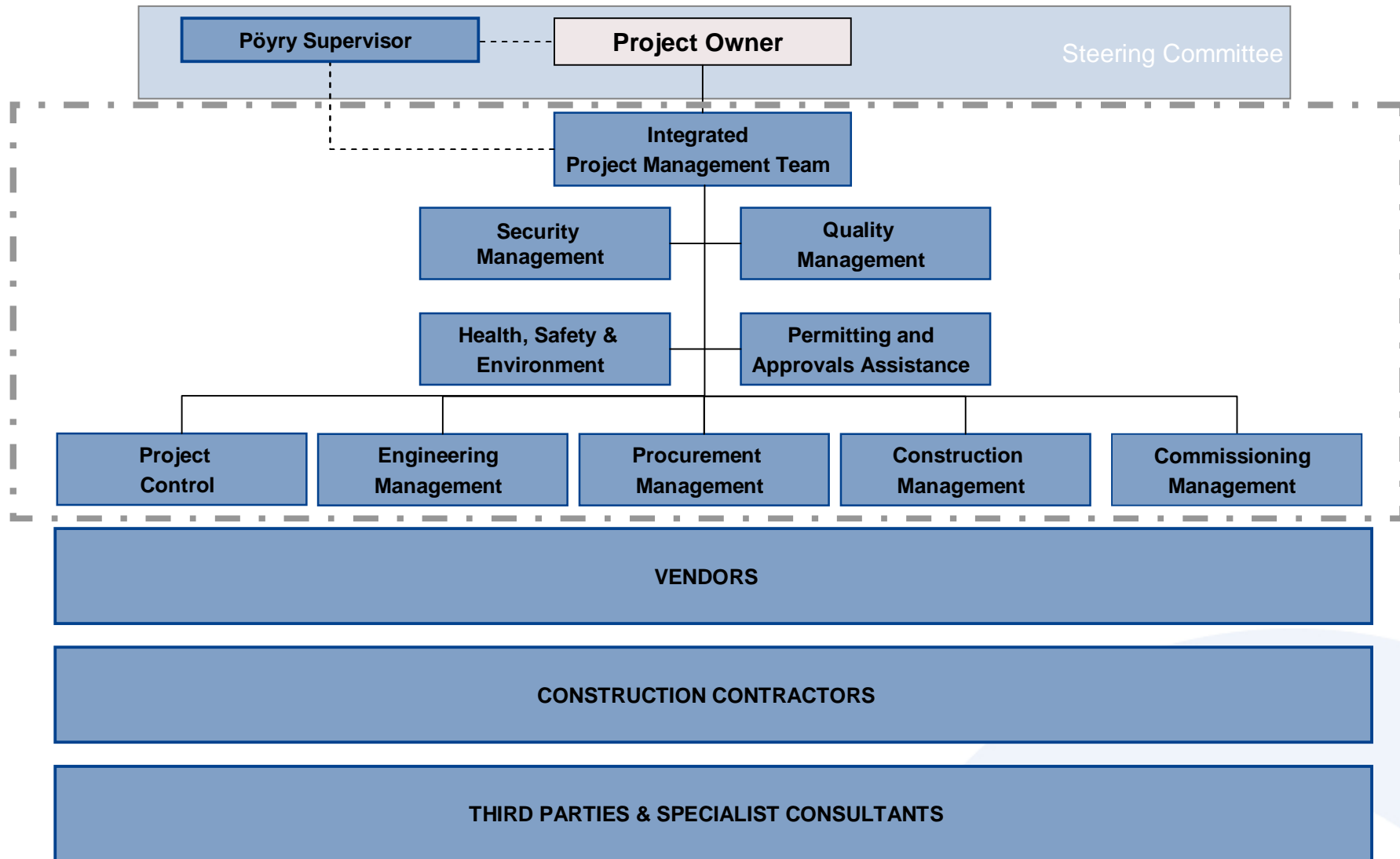
Project Management Consultancy (PMC)

Pöyry's Integrated Project Management Team Approach

Pöyry's services in PMC – Integrated Project Management Team

- Project Management Consultancy services (PMC) consist of the following:
 - Phase 1: PRE–FEED (Front End Engineering Design), up to the appointment of FEED Engineers
 - Review of feasibility study information, preparation of FEED invitation to bid packages, bid evaluation & recommendation
 - Phase 2: FEED Development, up to issuance of EPC (Engineering, Procurement, Construction) Tender Packages
 - Supervising FEED performance, preparation of duty specs and preparation of EPC invitation to bid packages
 - Phase 3: EPC Tendering & Evaluation Phase up to award of EPC Contracts
 - EPC bid evaluation and assistance in negotiations
 - Phase 4: Engineering, Procurement & Construction Management (EPCM)
 - Follow-up, monitoring the performance of EPC contractors, reporting and recommendations
 - Engineering, Procurement and Construction Management services for BOP (Balance of Plant)
- The Owner and Pöyry would form an Integrated Project Management Team, with resources coming from the Owner's and Pöyry's organisations.
 - The project will be managed by the Project Management Team
 - Pöyry will provide expertise and resources for planning, follow up, monitoring and reporting on the works and services provided by suppliers and contractors
 - The Client will make key technical and commercial decisions and commitments for the project, based on the recommendation of Integrated Project Management Team
 - Pöyry will verify that the work is done in line with the guidelines provided by the Client
- Project contracting strategy may consist of several large EPC packages and a small number of supporting EPC and other contracts.
 - The Integrated Project Management Team will define and negotiate the contracts and manage the contractors until the start-up of the plants.
 - The Client will remain as the formal contract party.

4ePCM™ – Integration of Knowledge by Integrated Project Management Team



Agenda

Pöyry 4ePCM™ project management concept

Pöyry Integrated Project Management Team approach

Pöyry Project Management Products

Pöyry Project Academy

4ePCM™ related unique products for critical project services

PÖYRY

CO-PILOT™

Risk management process - turn risks into opportunities, navigate securely through your projects, on schedule and within budget



PÖYRY

EARLY BIRD™

You can earn up to 8 % more revenue during the first year your chemical plant is running. Would you like to know how?



PÖYRY

EXPEDITION™

Outsource your challenges with deliveries - we audit suppliers and control deliveries throughout your project's lifecycle



PÖYRY

COSTAR™

Sound cost engineering - let Costar™ manage your investment costs, so you know where your money is going - throughout your investment project



Agenda

Pöyry 4ePCM™ project management concept

Pöyry Integrated Project Management Team approach

Pöyry Project Management Products

Pöyry Project Academy

Pöyry Project Academy

- More than 100 students trained
- A year long hands on training program
- Trainers are real Project Management experts
- Client, vendor, contractor view
- Participants from all continents
- Based on e-learning environment
- In compliance with ISO and PMI requirements
- Strong link to real project life
- Practice of virtual teams and distributed Project Management

Pöyry offers effective Engineering, Procurement and Construction Management service for Chemical Process Industry using its proprietary 4ePCM™ concept

